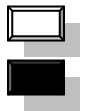


The second game by Rapport to be annotated during this event. Again he showed great aggressive positional play with Black and won a good game.



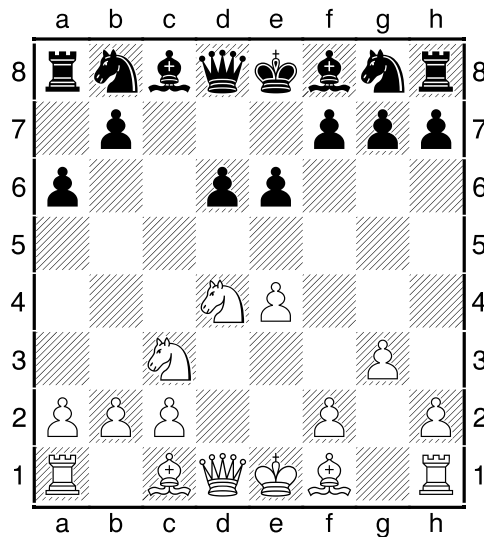
Lubbe (2410)

Rapport (2577)

40th Greek Team Championship 2012 Porto Rio Hotel (6.6), 04.07.2012

[Annotations by GM Aagaard]

1.e4 c5 2.♘f3 e6 3.d4 cxd4 4.♗xd4 d6 5.♗c3 a6 6.g3

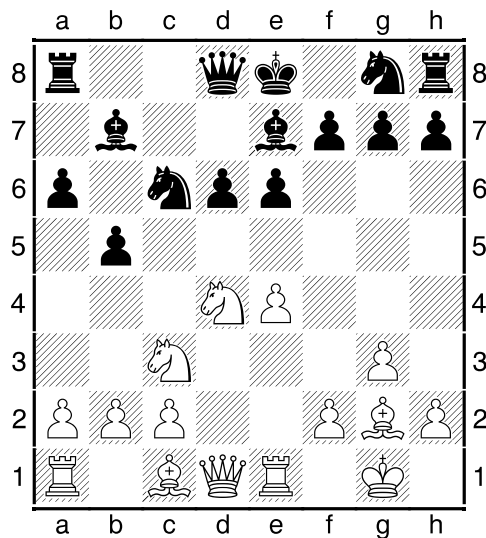


Not a very aggressive variation as the best of times.

6...b5 7.♗g2 ♗b7 8.0-0 ♗e7 9.♖e1

9.♗g4 is the type of move I would naturally gravitate towards here. But Black has a reasonable resource in 9...h5! 10.♗e2 Barczay – Mueller, Balatonbereny 1995. And now 10...h4!?N with good counterplay.

9...♗c6



10. ♖xc6

10.a4 seems the most normal reaction. 10...b4 11. ♖a2 a5 12. ♖xc6 ♙xc6 13.c3 bxc3 14. ♖xc3 ♗d7 was played in Rublevsky – Dominguez Perez, Poikovsky 2005. Interesting is now 15. ♖b5!?N ,with the idea 15...♙xb5 16.axb5 ♖xb5 17. ♙f1! ♗d7 18. ♗b3

10... ♙xc6 11. ♗d4

I am not sure what the queen is supposed to achieve here?

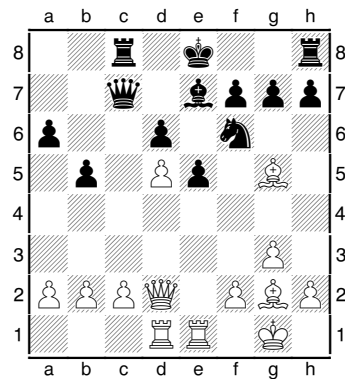
11... ♖f6 12. ♙g5 ♖c7 13. ♗ad1 ♖c8

A very slight inaccuracy. 13...0-0 was the right move. Black has no problems.

14. ♖e3?

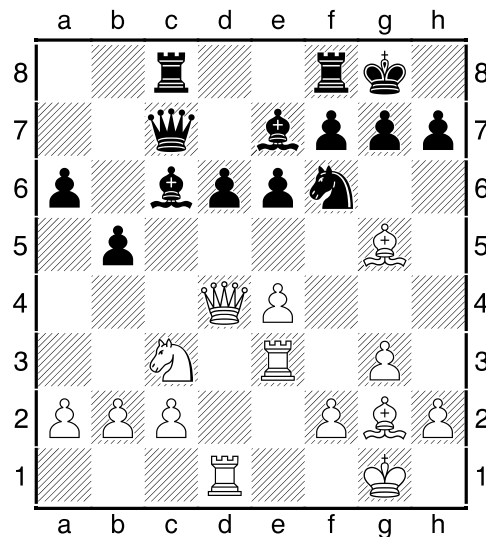
An odd move. This usually makes sense when the rook can go to g3 or h3 only.

White had a chance to improve his only misplaced piece with 14. ♖d5! , forcing Black to play 14...♙xd5 (14...exd5? 15.exd5 ♙a8 16. ♙xf6 gxf6 17. ♗xf6 ♖f8 18. ♙h3 ♖d8 19. ♗f5+- gives White a devastating attack.) 15.exd5 e5 16. ♗d2 (Analysis Diagram)



when I would rather have the two bishops. The tactical point is that 16...♙xc2 17.♖c1 ♜f5 gives White 18.♖xc8+ ♜xc8 19.♖c1± and Rc6 with pressure.

14...0-0



White is slightly oddly placed and has probably already missed the chance to be equal. If I saw this position for the first time, I would consider Ree1...

15.♙xf6

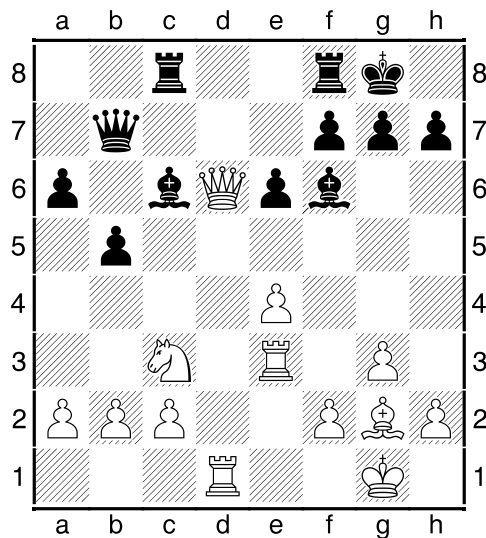
The question is if this makes things better or worse?

15...♙xf6!

Obviously; Black is happy to give up his only weakness for black squared control.

16.♙xd6 ♜b7

No endgame at this point.



17. ♕f4

17.a3 is maybe better, not to have a weak a-pawn later on. 17...a5 18.♖ed3 with the idea 18...b4 19.axb4 axb4 20.♗a2 ♕xe4 21.♕xe4 ♖xe4 22.♗xb4 ♖xb4 23.♗xb4 ♕xb2 and White has reasonable drawing chances here.

17...b4 18.e5

18.♗e2 ♖e7 also points to the e3-rook being badly placed.

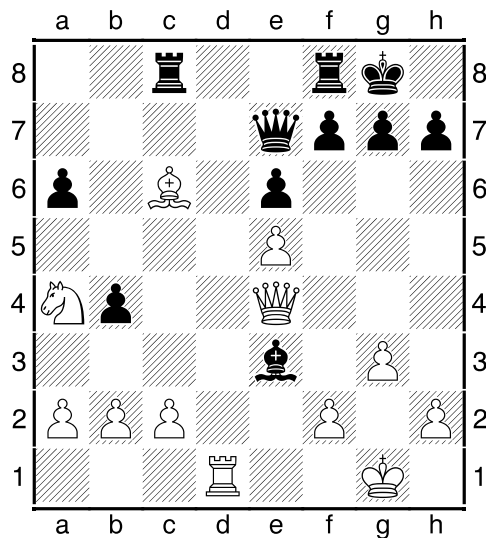
18...♕g5! 19.♕xc6

19.♖xg5 ♕xg2 20.♗e2 ♖xc2 and White's position is falling apart faster than the austerity economies.

19...♖e7!

Black picks up a fully earned material advantage.

20. ♖e4 ♕xe3 21. ♗a4



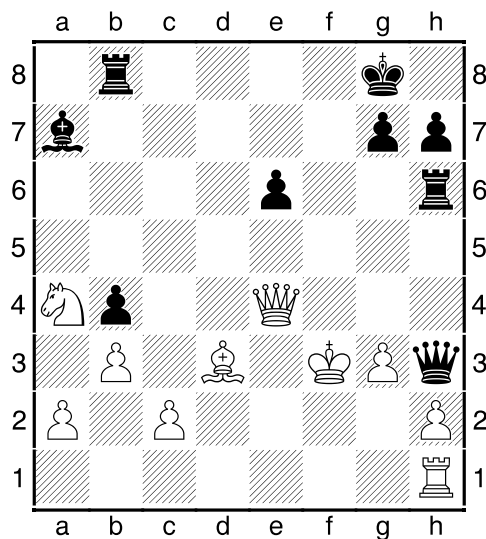
21...♙c7

21...♜fd8! was slightly more accurate: 22.♞xd8+ ♞xd8♞ based on 23.fxe3? ♞d1+ 24.♔g2 ♜d8!-+

22.♞b7 ♜b8 23.♞xa6?

The final mistake. White is also worse after 23.♞c6 ♞b6 24.♞d7 ♞c8♞, but a bit of hope exists.

23...♞xf2+! 24.♔g2 ♞a7 25.♔h3 f5 26.exf6 ♜xf6 27.♞d3 ♜h6+ 28.♔g2 ♞a5 29.b3 ♞h5 30.♞h1 ♞h3+ 31.♔f3



31...♜h4! A nice but unnecessary trick shot, leading to mate in 13!

32.♞xh4 ♜f8+ 33.♞f4 ♞h5+ 0-1